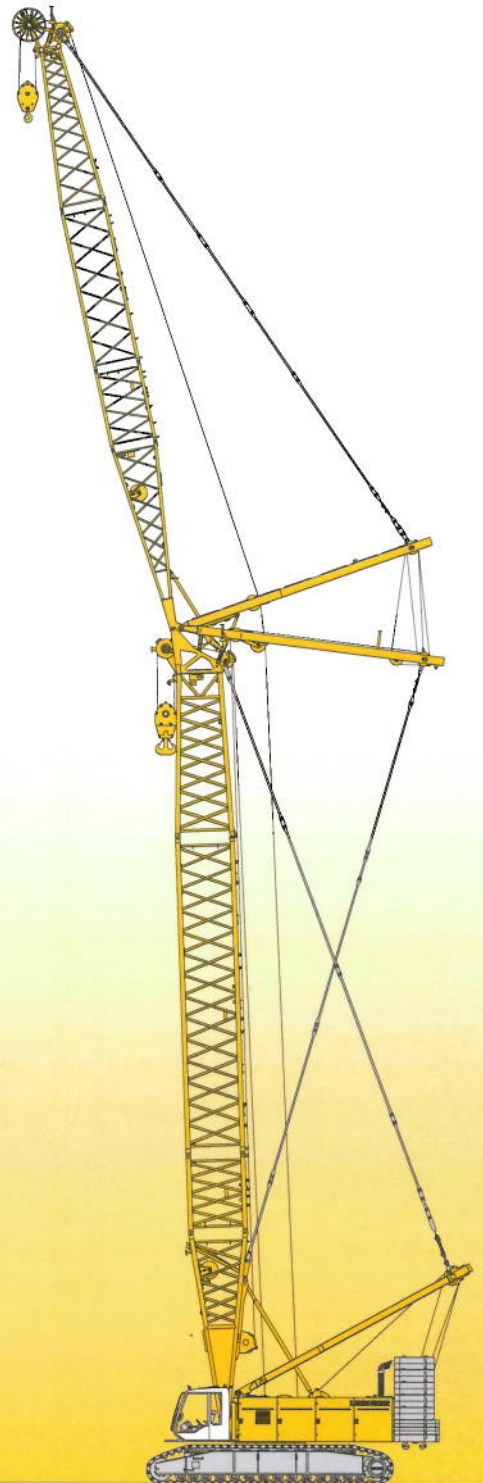


Technical data
Hydraulic lift crane

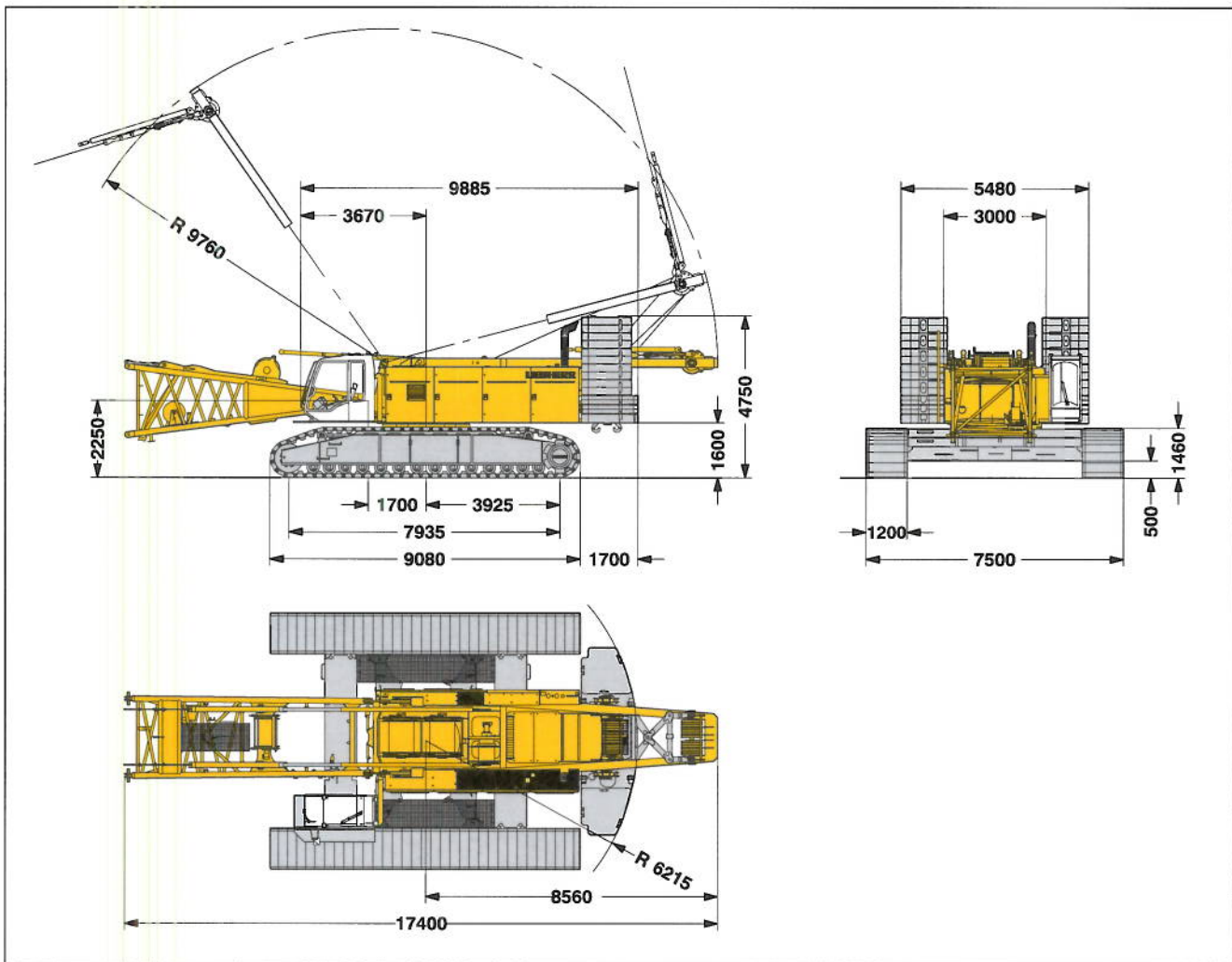
LR 1280
Litronic®



LIEBHERR

Dimensions

Basic machine with undercarriage



Operating weight

The operating weight includes the basic machine with crawlers, 2 main winches 150 kN and 20 m main boom, consisting of A-frame, boom foot (7 m), boom head (7 m), boom extension (6 m) 85.5 t basic counterweight, 36 t carbody counterweight and 300 t hook block.

Total weight _____ approx. 224.4 t

Ground pressure

Ground bearing pressure _____ 1.18 kg/cm²

Equipment

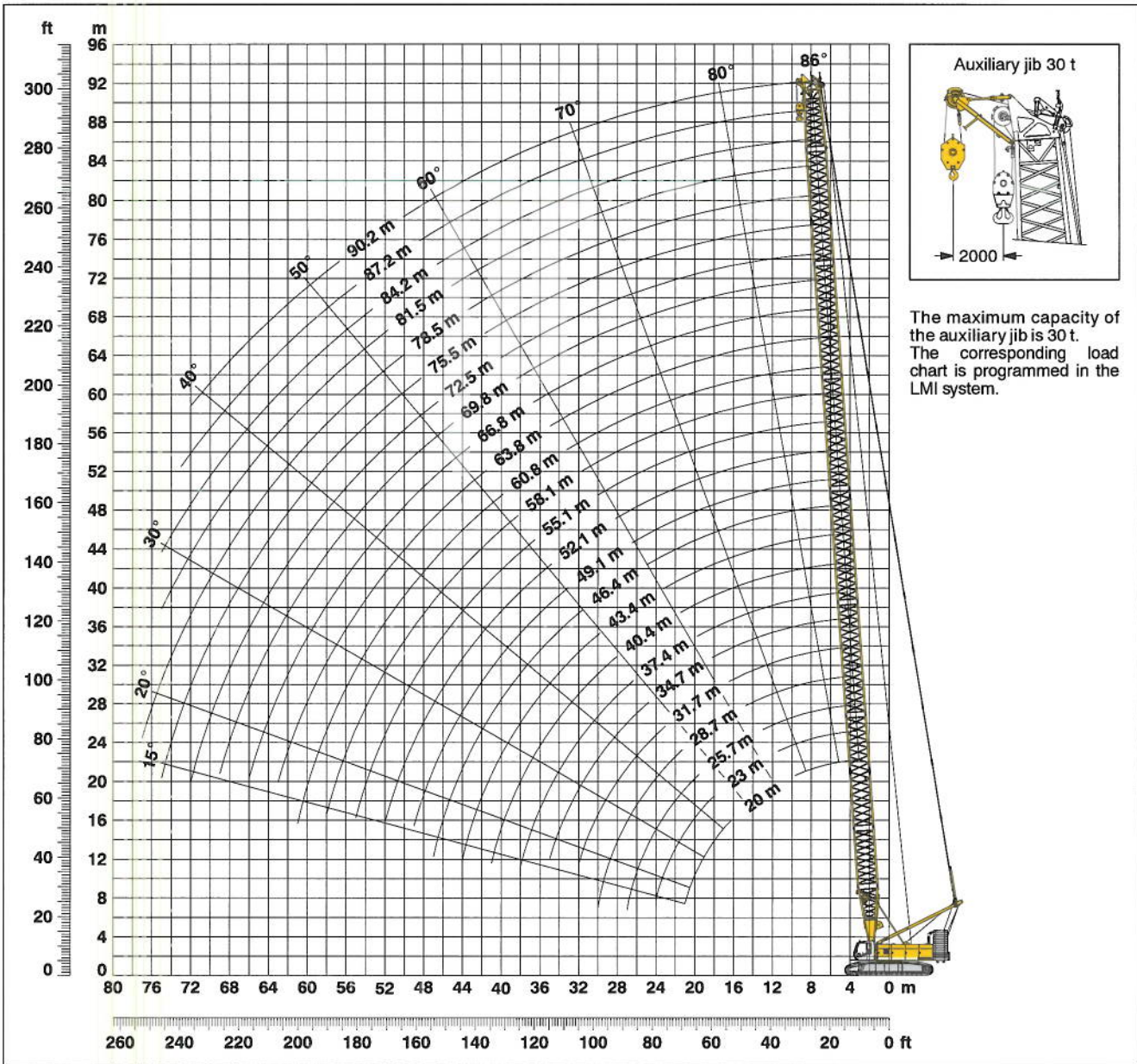
Main boom (No. 2220.xx) max. length _____ 90.2 m
 High reach (No. 2220.xx and 1916.xx) _____ 119.1 m
 Luffing jib (No. 1916.xx) max. length _____ 95.0 m
 Max. combination _____ boom 55.1 m and luffing jib 95.0 m
 Fixed jib (No. 1008.xx) _____ 11 m – 26 m
 Auxiliary jib 30 t lifting capacity

Remarks

1. The lifting capacities stated are valid for lifting operation only (corresponds with crane classification according to F.E.M. 1.001, crane group A1).
2. Crane standing on firm, horizontal ground.
3. The weight of the lifting device (hoisting ropes, hook block, shackle etc.) must be deducted from the gross lifting capacity to obtain a net lifting value.
4. Additional equipment on boom (e.g. boom walkways, auxiliary jib) must be deducted to get the net lifting capacity.
5. For max. wind speed please refer to lift chart in operator's cab or manual.
6. Working radii are measured from centre of swing and under load.
7. The lifting capacities are valid for 360 degrees of swing.
8. Calculation of stability under load is based on DIN 15019 / part 2 / chart 1 and ISO 4305 Table 1 + 2, tipping angle 4°.
9. The structures are calculated according to F.E.M. 1.001 – 1998 (EN 13001-2 / 2004).

Working range - main boom (No. 2220.xx) 86° - 15°

85.5 t counterweight and 36 t carbody counterweight



Main boom configuration (Table 1 - No. 2220.xx)

Configuration for boom lengths (20 m - 90.2 m)

Length	Amount of boom extensions																								
Boom foot 7.0 m	1	1	1	1	1	1	1	1	1	1	1	1	1	1	1	1	1	1	1	1	1	1			
Boom insert 3.0 m		1		1		1		1		1		1		1		1		1		1		1			
Boom insert 6.0 m	1	1			1	1			1	1			1	1			1	1			1	1			
Boom insert 11.7 m			1	1	1	1	2	2	2	2	3	3	3	3	4	4	4	4	5	5	5	5			
Boom head 7.0 m	1	1	1	1	1	1	1	1	1	1	1	1	1	1	1	1	1	1	1	1	1	1			
Boom length in (m)	20	23	25.7	28.7	31.7	34.7	37.4	40.4	43.4	46.4	49.1	52.1	55.1	58.1	60.8	63.8	66.8	69.8	72.5	75.5	78.5	81.5	84.2	87.2	90.2

Lift chart for main boom (No. 2220.xx)

Capacities in metric tons for boom lengths (20 m – 90.2 m) – with 150 kN winches
85.5 t counterweight and 36.0 t carbody counterweight

Radius (m)	Boom length in (m)													Radius (m)	
	20	25.7	31.7	37.4	43.4	49.1	55.1	60.8	66.8	72.5	78.5	84.2	90.2		
4.3	280.0													4.3	
5	265.4	256.6												5	
6	231.8	225.5	205.4	188.7	173.6									6	
7	202.4	187.3	172.4	160.2	148.9	139.4	120.5							7	
8	171.6	159.6	148.4	139.0	130.2	122.6	115.4	96.7	80.9	65.1				8	
9	148.0	138.8	130.0	122.6	115.4	109.3	103.3	92.1	78.4	64.7	59.4	48.4		9	
10	130.0	122.7	115.5	109.5	103.5	98.4	93.4	88.9	74.9	61.6	58.3	47.9	40.9	10	
12	102.0	99.2	94.2	89.9	85.5	81.8	78.0	74.6	63.3	57.2	56.0	45.6	39.1	12	
14	81.7	82.0	79.2	75.9	72.5	69.6	66.6	63.9	61.1	52.1	51.9	43.5	37.7	14	
16	67.7	68.0	67.8	65.5	62.7	60.3	57.8	55.6	53.3	48.4	48.4	41.5	35.9	16	
18	57.5	57.9	57.7	57.4	55.0	53.0	50.9	49.0	47.0	44.4	43.3	39.9	34.5	18	
20	49.6	50.1	49.9	49.7	48.9	47.1	45.2	43.6	41.8	40.2	38.3	37.1	33.3	20	
22		44.0	43.8	43.6	43.3	42.2	40.6	39.1	37.5	36.1	34.6	33.2	30.6	22	
24		39.0	38.8	38.7	38.3	38.0	36.6	35.3	33.8	32.5	31.1	29.9	28.3	24	
26		34.8	34.8	34.6	34.2	33.9	33.3	32.0	30.7	29.5	28.2	27.0	25.8	26	
28			31.3	31.2	30.8	30.5	30.1	29.2	28.0	26.8	25.6	24.5	23.4	28	
30			28.3	28.3	27.9	27.6	27.1	26.8	25.6	24.5	23.4	22.3	21.2	30	
32			25.7	25.8	25.4	25.1	24.6	24.3	23.5	22.5	21.4	20.4	19.3	32	
34				23.5	23.2	22.9	22.4	22.1	21.6	20.6	19.6	18.6	17.6	34	
36				21.6	21.3	21.0	20.5	20.1	19.7	19.0	18.0	17.1	16.1	36	
38				19.8	19.5	19.3	18.8	18.4	17.9	17.5	16.5	15.6	14.7	38	
40					18.0	17.7	17.3	16.9	16.4	16.0	15.2	14.3	13.4	40	
44						15.1	14.7	14.3	13.8	13.4	12.9	12.1	11.2	44	
48							12.9	12.5	12.2	11.7	11.3	10.7	10.2	9.3	48
50								11.6	11.2	10.7	10.3	9.8	9.3	8.5	50
55								9.5	9.2	8.7	8.3	7.8	7.3	6.6	55
60									7.4	7.0	6.6	6.1	5.7	5.1	60
65										5.6	5.2	4.7	4.3	3.7	65
70											4.0	3.5	3.0	2.5	70
75												2.4	2.0	1.5	75
80													1.1		80

Above lift chart is for reference only. For actual lift duty please refer to lift chart in operator's cab or manual.
Capacities over 280 t require a special heavy duty boom head.